

# PTFE Filter Cartridge ( PF )

PTFE filter membrane is used and the core support is made of polypropylene material or the stainless steel. It is produced by thermal welding technology. The hydrophobic filter with strong acid and alkali resistance is usually used in organic solvents and gas filtration.

**Features and Benefits:**

- Heat and ozone resistance
- Absolutely bacteria removal in a wet or dry environment
- Strong acid and strong alkali resistance with excellent chemical compatibility
- Wonderful pyrogen control and biological safety
- No fiber migration with ultra pure water washing
- Filter Cartridge 100% pass integrity tested

**Size:**

- OD:φ69mm
- ID:φ33mm
- Length: 5" ,10" ,20" ,30" ,40"

**Composition:**

- Filter media:polytetrafluoroethylene membrane
- Support/drain layers:Polypropylene
- Cage support /Adaptor:Polypropylene
- core support:Polypropylene/SUS
- Sealing compound:Silicone, EPDM, NBR, Viton, PTFE,
- Viton coated with PTFE

**Feature:**

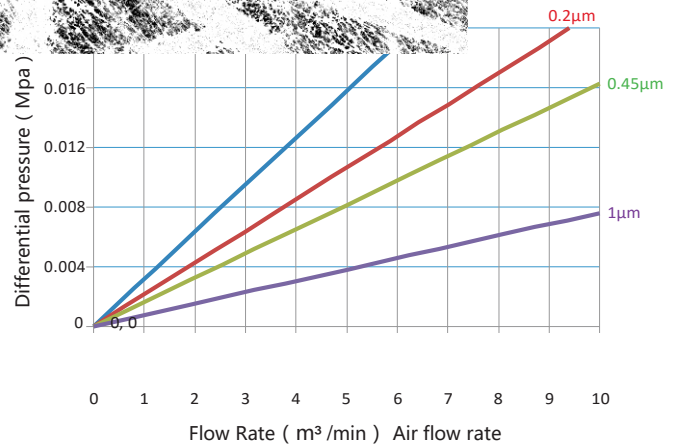
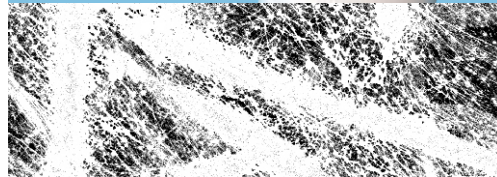
- PH:1-14
- Max Temperature:90°C
- Max Pressure difference:0.42Mpa/25°C , 0.1Mpa/80°C

**Application:**

- Steam dust and bacteria removal
- Ultra pure gas filtration

- Compressed air sterile filtration
- Air filtration in aseptic packaging.
- Aggressive acids, bases and solvents
- Tank vent, fermentation air

**Order Information**



Name	Micron	Adapter	Length	Sealing Materials	Core support
PF	010=0.1µm	DOE=DOE	5=5in	S= Silicone	P=Polypropylene
	020=0.2µm	TF=222/PIN	10=10in	E=EPDM	G=SUS
	045=0.45µm	SF=226/PIN	20=20in	N=NBR	
	1=1µm	TC=222/Cap	30=30in	V=Viton	
		SC=226/Cap	40=40in	T=PTFE	
		GSF=226SUS/PIN		F=Viton coated with PTFE	
		GTF=222SUS/PIN			