

# ( LPP ) Polypropylene filter cartridge

LPP pleated cartridge is fitted with double layered filter medium made of submicron polypropylene . With more than 0.5M<sup>2</sup>/10inch filter area and thermal weld of all polypropylene components, that make this kind cartridge adhering to the USP Class VI and FDA CFR Title 21 criteria. do not contain binding agents, adhesives or additives. A high dirt-hold capacity and a low differential pressure, especially for filtering out impurities such as solid particles.

**Features and Benefits :**

- Low differential pressures, high dirt-retention capacity and a long service life.
- Pleated depth filtration with maximum filtration area. high flow rate.
- Great chemical compatibility and acid-base resistance for liquid filtration
- A wide range of fine filters which is suitable for different industries

**Technical data**

- Size : OD :
- φ69mm ID :
- φ33mm
- Length : 5" , 10" , 20" , 30" , 40"

**Composition :**

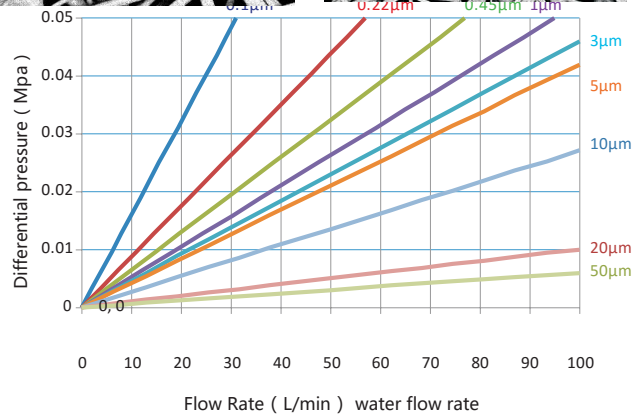
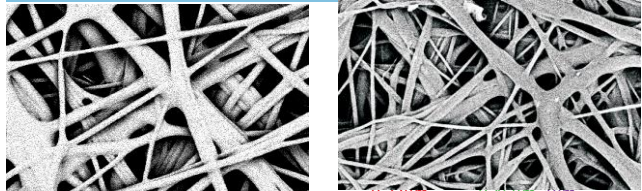
- Filter media : Polypropylene membrane
- Support/Drain layer : Polypropylene Cage support /Adaptor : Polypropylene
- Core support : Polypropylene/SUS
- Sealing compound : Silicone, EPDM, NBR, Viton, PTFE, Viton coated with PTFE

**Feature :**

- PH : 1-13
- Max Temperature : 80°C
- Max Pressure difference : 0.42Mpa/25°C , 0.1Mpa/80°C

**Application:**

- Filters in water-treatment plants
- Pre-filters in ultrapure water for the electronic industry



- Drinking water for food and beverages
- Process filters for acids and lyes Filtration
- of inks for ink-jet applications

Liquid or gas filtration for biological products, compressed air .etc

**Order Information**

Name	Micron	Adapter	Length	Sealing Materials	Core support
LPP	010=0.1µm	DOE=DOE	5=5in	S= Silicone	P=Polypropylene
	022=0.22µm	TF=222/PIN	10=10in	E=EPDM	G=SUS
	045=0.45µm	SF=226/PIN	20=20in	N=NBR	
	1=1µm	TC=222/Cap	30=30in	V=Viton	
	3=3µm	SC=226/Cap	40=40in	T=PTFE	
	5 =5µm	GSF=226SUS/PIN		F=Viton coated with PTFE	
	10=10µm	GTF=222SUS/PIN			
	20=20µm				